



CONSENSUS STATEMENT

Consensus Statements of the American College of Veterinary Internal Medicine (ACVIM) provide the veterinary community with up-to-date information on the pathophysiology, diagnosis, and treatment of clinically important animal diseases. The ACVIM Board of Regents oversees selection of relevant topics, identification of panel members with the expertise to draft the statements, and other aspects of assuring the integrity of the process. The statements are derived from evidence-based medicine whenever possible and the panel offers interpretive comments when such evidence is inadequate or contradictory. A draft is prepared by the panel, followed by solicitation of input by the ACVIM membership which may be incorporated into the statement. It is then submitted to the Journal of Veterinary Internal Medicine (JVIM), where it is edited before publication. The authors are solely responsible for the content of the statements. The findings and conclusions in this report are those of the author(s) and do not necessarily represent the official position of the Centers for Disease Control and Prevention (CDC), the International Renal Interest Society (IRIS), or the International Society for Companion Animal Infectious Diseases (ISCAID).

Updated ACVIM consensus statement on leptospirosis in dogs

Jane E. Sykes¹  | Thierry Francey²  | Simone Schuller² | Robyn A. Stoddard³ | Larry D Cowgill¹ | George E. Moore⁴

¹Department of Medicine and Epidemiology, University of California, Davis, Davis, California 95616, USA

²Department of Clinical Veterinary Science, Vetsuisse Faculty, University of Bern, Bern, Switzerland

³Bacterial Special Pathogens Branch, Centers for Disease Control and Prevention, Atlanta, Georgia 30333, USA

⁴Department of Veterinary Administration, Purdue University, West Lafayette, Indiana 47907, USA

Correspondence

Jane E. Sykes, Department of Medicine and Epidemiology, University of California, Davis, Davis, CA 95616, USA.

Email: jesykes@ucdavis.edu

[Correction added after first online publication on 17 November 2023. "Supportive" and "Confirmatory" headers were switched in section 3.1.2. SPECIFIC LABORATORY CRITERIA and article title has been corrected.]

Abstract

Since publication of the last consensus statement on leptospirosis in dogs, there has been revision of leptospiral taxonomy and advancements in typing methods, widespread use of new diagnostic tests and vaccines, and improved understanding of the epidemiology and pathophysiology of the disease. Leptospirosis continues to be prevalent in dogs, including in small breed dogs from urban areas, puppies as young as 11 weeks of age, geriatric dogs, dogs in rural areas, and dogs that have been inadequately vaccinated for leptospirosis (including dogs vaccinated with 2-serovar *Leptospira* vaccines in some regions). In 2021, the American College of Veterinary Internal Medicine (ACVIM) Board of Regents voted to approve the topic for a revised Consensus Statement. After identification of core panelists, a multidisciplinary group

Abbreviations: ACVIM, American College of Veterinary Internal Medicine; AKI, acute kidney injury; ALP, alkaline phosphatase; ALT, alanine aminotransferase; aPTT, activated partial thromboplastin time; ARDS, acute respiratory distress syndrome; CBC, complete blood count; CDC, Centers for Disease Control and Prevention; CK, creatine kinase; CKDu, chronic kidney disease of uncertain etiology; COVID-19, coronavirus disease of 2019; CT, computed tomography; DGGR, 1,2-o-dilauryl-rac-glycero-3-glutaric acid-(6'-methylresorufin) ester; DNA, deoxyribonucleic acid; ECG, electrocardiogram; EDTA, ethylenediaminetetraacetic acid; EKST, extracorporeal kidney support therapy; IRIS, International Renal Interest Society; ISCAID, International Society for Companion Animal Infectious Diseases; LOA, level of evidence; LPHS, leptospiral pulmonary hemorrhage syndrome; LPS, lipopolysaccharide; MAT, microscopic agglutination test; NAAT, nucleic acid amplification test; OR, odds ratio; PCR, polymerase chain reaction; PT, prothrombin time; SARS-CoV-2, severe acute respiratory syndrome coronavirus 2; SDMA, symmetric dimethyl arginine; SDS-PAGE, sodium dodecyl sulfate-polyacrylamide gel electrophoresis; ST, sequence type; SWGA, selective whole genome amplification; UPC, urine protein-to-creatinine ratio.

This is an open access article under the terms of the [Creative Commons Attribution-NonCommercial-NoDerivs](https://creativecommons.org/licenses/by-nc-nd/4.0/) License, which permits use and distribution in any medium, provided the original work is properly cited, the use is non-commercial and no modifications or adaptations are made.

© 2023 The Authors. *Journal of Veterinary Internal Medicine* published by Wiley Periodicals LLC on behalf of American College of Veterinary Internal Medicine.

of 6 experts from the fields of veterinary medicine, human medicine, and public health was assembled to vote on the recommendations using the Delphi method. A draft was presented at the 2023 ACVIM Forum, and a written draft posted on the ACVIM website for comment by the membership before submission to the editors of the *Journal of Veterinary Internal Medicine*. This revised document provides guidance for veterinary practitioners on disease in dogs as well as cats. The level of agreement among the 12 voting members (including core panelists) is provided in association with each recommendation. A denominator lower than 12 reflects abstention of ≥ 1 panelists either because they considered the recommendation to be outside their scope of expertise or because there was a perceived conflict of interest.

KEYWORDShepatitis, IRIS, *Leptospira interrogans*, nephritis, zoonosis**1 | INTRODUCTION AND EPIDEMIOLOGY**

Leptospirosis is caused by the spirochete *Leptospira*, a zoonotic bacterial pathogen that infects a wide variety of mammals and poikilothermic animals worldwide.¹⁻¹² Pathogenic leptospires can be serotyped into over 300 different serovars based on their outer lipopolysaccharide antigens.¹³ Serovars are organized into antigenically related serogroups. However, serogroup classification is confusing because the same serovar can be found in multiple different species, and each serogroup often contains a serovar with the same name (eg, serovar Grippotyphosa, serogroup Grippotyphosa). Therefore, there has been a move to classify *Leptospira* strains based on DNA sequence composition (sequence types [STs]).^{13,14} Based on sequence information, the 68 known species¹⁵ of *Leptospira* are grouped into 2 pathogenic subclades, P1 (Pathogens 1, pathogenic species) and P2 (Pathogens 2, intermediately pathogenic), and 2 saprophytic subclades S1 and S2.¹³ The P1 subclade is further divided into “high virulence” and “low virulence” pathogenic species. Most leptospirosis in dogs results from infections by P1-virulent species such as *Leptospira interrogans*, *Leptospira borgpetersenii*, and *Leptospira kirschneri*, although occasionally P2 species have been associated with severe disease in dogs.¹⁶

Infections with *Leptospira* spp. occur when mucous membranes or abraded skin are exposed to pathogenic strains that are shed from the renal tubules of infected reservoir hosts. **Worldwide, the most important reservoir hosts are rodents, especially *Rattus norvegicus*, in which a worldwide prevalence of infection of 30% has been identified, with prevalence exceeding 80% in some regions.¹⁷ Other wild-life and domestic animal species are also important in the epidemiology of disease (LOA 12/12).** Organisms contaminate soil and water and can remain viable in the environment for weeks to months when conditions are optimal.¹⁸ Biofilm formation contributes to the ability of the spirochete to persist in the environment and in renal tubules of reservoir hosts.^{19,20} The spirochete can replicate in water-saturated soil,¹⁸ which might contribute to accumulation of organisms in the environment. Leptospirosis is especially prevalent in regions with higher annual rainfall and warm climates. To some extent,

seasonal leptospirosis incidence varies geographically depending on local rainfall patterns and periods of freezing temperatures that decrease spirochete viability.^{8,21} However, because transmission also occurs after direct contact with reservoir hosts, including predation, after bite wounds, and through venereal and placental transfer, disease can occur in urban regions, and at times of year when organisms survive poorly in the environment.^{8,22-25} The presence of backyard poultry, composting, or poor sanitation (eg, hoarding), can increase rodent populations and exposure risk to leptospires outside and inside homes. Outbreaks also have been recognized in regions with semi-arid climates in association with dog daycare or kennel environments,²⁶⁻²⁸ possibly because of direct dog-to-dog or rodent-to-dog transmission. **All dogs are at risk of leptospirosis, regardless of signalment, geographic location, lifestyle, and the time of year (LOA 12/12).**

There is widespread serologic evidence of infection of domestic cats by *Leptospira* spp., but based on rare reports of clinical disease, cats are considered disease-resistant when compared with other animal species.^{29,30} Pathogenic leptospires have been detected in the urine of up to 20% of apparently healthy cats using PCR and culture,³¹⁻³⁴ and thus cats may act as reservoir hosts. However, other studies worldwide have shown lower prevalence of leptospiuria (0% to 5%), even in free-roaming cats.^{35,36} **Cats may be an under-recognized source of pathogenic leptospires in some regions and should be considered in One Health investigations that employ sequence typing methods to advance knowledge of disease epidemiology (LOA 11/11).**

Because immunity induced by vaccination with current *Leptospira* bacterins is serogroup-specific, knowledge of serogroups that commonly cause disease within a particular geographic region remains important for vaccine design. After introduction of 4-serovar vaccines in North America in the mid-2000s and subsequently in Europe and South America, leptospirosis has been recognized predominantly in unvaccinated dogs or dogs vaccinated with 2-serovar vaccines.^{6,37} Although traditionally the dog has been considered the reservoir host for serovar Canicola, this paradigm has been challenged by the

identification of chronic subclinical infections in dogs with other serovars, the detection of serovar Canicola in dogs with acute disease, and the identification of other host species, such as rodents, horses, and pigs, as the source of serovar Canicola strains.^{17,38,39} In addition, 1 model indicated that rodents served as the main source of environmental contamination even when dog-adapted strains were present in a population of humans, rodents, and free-roaming and owned dogs.⁴⁰ **Given this observation, until additional evidence is available, dogs should not be assumed to be the reservoir host when serovar Canicola is identified or suspected as the cause of disease (LOA 12/12).** Because the pattern of seroreactivity identified by microscopic agglutination test (MAT) serology does not reliably predict the infecting serogroup,⁴¹ and many STs belong to a serogroup, accurate identification of potential sources of infection requires sequence typing. For example, a combination of sequence typing and serotyping was used to identify black rats as the likely source of infection of a dog in Japan with *L. interrogans* serogroup Australis.⁴²

2 | PATHOPHYSIOLOGY AND CLINICAL MANIFESTATIONS

After entering the host through mucous membranes, skin lesions, or macerated skin, pathogenic leptospires enter the bloodstream and rapidly disseminate throughout the body.⁴³ In circulation, leptospires use multiple strategies to evade innate immune recognition and innate host defense and killing mechanisms.⁴⁴ Utilizing corkscrew motion, leptospires efficiently invade host tissues at gel-liquid borders such as vascular walls,⁴⁵ emigrating from the vascular space by binding to vascular endothelial cadherin and weakening endothelial cell barriers.⁴⁶

Breakdown of the endothelial cell barrier also may contribute to the development of leptospiral pulmonary hemorrhage syndrome (LPHS) in dogs and other host species.⁴⁷⁻⁴⁹ The molecular pathogenesis of leptospirosis has been reviewed recently.⁴⁶ **Although the most prominent manifestations of leptospirosis reflect acute tubulointerstitial nephritis and liver dysfunction, the disease is multisystemic, and many other organs are affected (Table 1; LOA 11/11).**^{1,50} Associations between infecting strain and clinical manifestations of disease have not been clearly identified.⁵¹ Kidney and hepatic manifestations usually occur together, but occasionally are recognized in isolation.⁵² Liver dysfunction results from disruption of hepatocyte intercellular junctions by spirochetes, with leakage of bile into the circulation which is reflected biochemically as a cholestatic hepatopathy. Pathogenic leptospires have direct cytotoxic effects on platelets, with platelet destruction and de-adherence noted in vitro.⁵³ Aseptic meningitis has been described in up to 25% of humans with leptospirosis,⁵⁴ and appears to occur in dogs.⁵⁵ Histopathological lesions of LPHS lung tissue are characterized by various degrees of intra-alveolar hemorrhage in the absence of a marked inflammatory cell infiltrate or vasculitis. Intra-alveolar edema, fibrin, and hyaline membranes, which are characteristic of disorders with diffuse alveolar damage such as acute respiratory distress syndrome, also can be present, but are not a predominant feature.¹ Although the pathogenic mechanisms of LPHS are poorly understood, they likely are multifactorial, with both host- and pathogen-related factors playing a role.⁵⁶

Once the host mounts an acquired immune response, leptospires are cleared from the blood but may persist as biofilm in the eye⁵⁷ or the renal tubules.¹⁹ Progression of tubulo-interstitial nephritis to renal fibrosis has been described in dogs.⁵⁸ *Leptospira* infection has been associated with acute interstitial nephritis of uncertain etiology in

TABLE 1 Clinical manifestations of leptospirosis in dogs.

Organ involvement	Possible clinical signs	Diagnostic investigation
Acute kidney injury (tubulointerstitial nephritis)	Vomiting, diarrhea, dehydration, lethargy, inappetence, polyuria, polydipsia, oliguria, anuria, abdominal pain	Azotemia, electrolyte abnormalities, isosthenuria, glucosuria, proteinuria, pyuria, cylindruria, hyperechoic renal cortices
Cholestatic hepatopathy	Vomiting, diarrhea, dehydration, lethargy, inappetence, icterus	Increased liver enzymes, hyperbilirubinemia, hypoalbuminemia
Leptospiral pulmonary hemorrhage syndrome	Tachypnea, hemoptysis, increased breath sounds	Anemia, hypoxemia, diffuse or patchy interstitial to alveolar patterns
Coagulopathy	Petechiae, ecchymoses, hematuria, melena, hematemesis, epistaxis	Anemia, hypoalbuminemia, thrombocytopenia, hyperfibrinogenemia
Vasculitis	Peripheral edema, mild ascites, pleural effusion	Pleural effusion, mild ascites/retroperitoneal fluid
Pancreatitis	Vomiting, diarrhea, abdominal pain	Hyperbilirubinemia, increased liver enzyme activities, increased canine pancreas-specific lipase activity, increased DGGR lipase
Ocular involvement	Uveitis, conjunctivitis, retinal hemorrhages	Fundoscopy examination
Myocarditis	Cardiac arrhythmias	Increased serum troponin, ECG abnormalities
Enteritis	Vomiting, diarrhea, abdominal pain	Thickened intestinal walls, evidence of intestinal intussusception
Myositis	Reluctance to move	Increased CK activity
Reproductive tract	Abortion, infertility	
Skin	Calcinosis cutis	

humans, which may be a precursor to chronic kidney disease of uncertain etiology.⁵⁹ **More evidence is needed before ascribing a causative role to leptospires in chronic hepatitis in dogs in the absence of kidney disease (LOA 11/11).**^{60,61}

The initial febrile phase of the disease is often non-specific. Some dogs may be evaluated by veterinarians in this phase, before there is biochemical evidence of organ dysfunction. Affected dogs may show inappetence, lethargy, vomiting, increased thirst and urination because of non-oliguric renal dysfunction, fever, or some combination of these signs. **Because leptospirosis can progress rapidly to acute kidney injury (AKI), the disease should be considered in dogs with acute onset of febrile illness, especially if unvaccinated for leptospirosis. The owners of such dogs should be informed that clinical re-assessment and biochemical testing are recommended should their dog's condition fail to improve within 24 hours. If the regional incidence of leptospirosis is high or the history otherwise supports the possibility of leptospirosis, nucleic acid amplification testing (NAAT) should be offered (see Section 3). Based on studies in humans,^{62,63} empirical treatment with doxycycline for 7 days also could be considered, but more evidence is needed to support the latter recommendation to optimize antimicrobial stewardship (LOA 11/11).**

Clinicopathologic alterations observed in subsequent phases of the disease reflect its multisystemic nature, including direct organ injury and secondary complications such as aspiration pneumonia, pancreatitis, intestinal bacterial translocation, or sepsis. Observed changes are influenced further by the timing of presentation, the severity of the disease, and previous treatments.

The most common CBC findings include neutrophilia (27%-94%), increased band neutrophils (3%-81%), lymphopenia (2%-29%), monocytosis (29%-68%), thrombocytopenia (14%-73%), and mild to moderate, non-regenerative anemia (18%-92%).^{48,64-79} Uncommonly, severe anemia occurs, which may follow gastrointestinal or pulmonary hemorrhage.⁸⁰ Serum biochemistry alterations^{48,64-68,71-79} reflect organ dysfunction and may show different profiles depending on the geographic origin or the timing of presentation of reported cases. Acute kidney injury is associated with increased blood urea nitrogen (54%-100%), creatinine (55%-100%), and phosphate (42%-100%) concentrations. Hepatic injury manifests as increased liver enzyme activities, dominated by increased ALP (19%-94%), and to a lesser extent increased ALT (22%-87%) and AST (28%-69%). Hyperbilirubinemia (15%-94%) typically occurs in the absence of other clinicopathologic signs of liver failure. Mild to moderate hypoalbuminemia frequently is observed in dogs with leptospirosis (18%-88%). C-reactive protein has been moderately increased in all dogs with *Leptospira*-induced AKI,^{72,77} but this was not different from dogs with AKI from other causes.⁷² Electrolyte abnormalities may relate to gastrointestinal or kidney dysfunction and may be aggravated by direct inhibition of the tubular Na⁺-K⁺-ATPase by leptospiral endotoxin.⁸¹ Frequently reported electrolyte abnormalities include hyperkalemia (12%-53%), hypokalemia (17%-41%), hyponatremia (12%-64%), and hypochloremia (12%-46%).^{64,66,71-73,76,77} In humans, leptospires usually induce hypokalemic, non-oliguric AKI with impaired tubular sodium reabsorption,⁸² and the same may occur in dogs. However, severe

hyperkalemia may be encountered in dogs with oliguric or anuric AKI. In these dogs, hyperkalemia often is a limiting factor for successful conservative management. Serum creatine kinase activity was increased in 44% of dogs with leptospirosis, suggesting myositis.⁷⁷ Increased serum troponin I concentration in 69%-94% of dogs supports the presence of myocardial injury.^{77,83} Its concentration was associated with frequency of cardiac arrhythmias but not with outcome, and it did not differ from dogs with AKI of other etiologies (83%), suggesting an indirect complication of AKI rather than a direct organ manifestation of leptospirosis.⁸³ Similarly, increased amylase and lipase activities have been reported in 40%-77% and 19%-100% of dogs with leptospirosis, respectively.^{66,73,77} These nonspecific changes may reflect pancreatitis, gastroenteritis, or decreased renal elimination. The more specific serum DGGR-lipase activity (which is increased in 29% of dogs with AKI) seems to be a feature of AKI rather than leptospirosis; it was not different between dogs with and without infectious causes of AKI.⁸⁴

Urinalysis in dogs with leptospirosis typically shows isosthenuria, but hyposthenuria also has been reported.^{66,67,77,79} Renal glucosuria (18%-83%) and cylindruria (8%-67%) are specific indicators of tubular damage.^{48,66,67,71,73-75,77,79} Proteinuria is reported in most dogs with leptospirosis (28%-81%) and its magnitude is usually mild to moderate (urinary protein-to-creatinine ratio [UPC] < 5), although UPCs of up to 20 have been reported.^{48,77} Sodium dodecyl-sulfate polyacrylamide gel electrophoresis of urinary proteins suggests that the predominant mechanism of proteinuria in dogs with leptospirosis is defective tubular reabsorption of low molecular weight proteins (tubular proteinuria, 100%), accompanied by glomerular loss of high molecular weight proteins caused by altered permselectivity characteristics in 60%-90% of dogs (glomerular proteinuria).^{77,85} Other changes observed on urinalysis include occasional mild pyuria (0%-100%), hematuria (17%-74%), and bilirubinuria (20%). Leptospires are not usually visible in the urine sediment using routine light microscopy, because the width of leptospires is below the resolution of light microscopy, but large numbers of small, faintly stained organisms were visualized in urine sediment from 1 dog.⁸⁶

Evaluation of hemostasis in dogs with leptospirosis indicates hemostatic abnormalities in up to 83% and disseminated intravascular coagulation in 6%-44% of dogs with leptospirosis.^{48,73-75,77,87} In addition to thrombocytopenia, the most common abnormalities were hyperfibrinogenemia (43%-75%), hypofibrinogenemia (20%), prolonged prothrombin time (6%-33%), prolonged activated partial thromboplastin time (6%-83%), low antithrombin concentration (94%), and increased D-dimer concentrations (39%-63%). Thromboelastometric evaluation showed hypercoagulable profiles in 14 dogs (40%) and hypocoagulable profiles in 7 affected dogs (20%).⁸⁷

Radiographic changes indicative of the severe pulmonary form of leptospirosis with hemorrhages (LPHS) typically develop bilaterally in the caudodorsal lung fields as a mild interstitial pattern, progressing to a reticulonodular pattern, and to focal or generalized alveolar infiltrates (Figure 1).^{1,48,88,89} Marked abnormalities can be seen on radiographs before the occurrence of recognizable respiratory impairment. **Thoracic radiography is recommended in all dogs suspected to have**

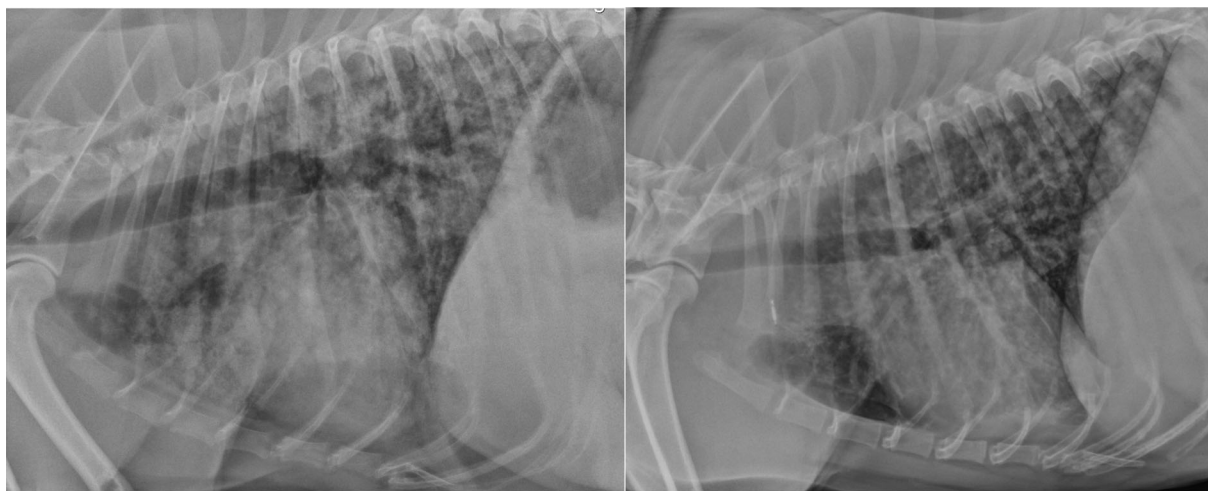


FIGURE 1 Lateral thoracic radiographs from dogs with leptospiral pulmonary hemorrhage syndrome showing diffuse mixed bronchointerstitial-alveolar pattern (left) and micronodular pattern (right). Both dogs were confirmed to have leptospirosis based on acute and convalescent phase serologic testing.

leptospirosis, even in the absence of respiratory signs, because radiographic findings consistent with LPHS can aid in diagnosis of leptospirosis and should prompt judicious fluid therapy and close monitoring of respiratory function (LOA 10/10). Repeated thoracic computer tomographic evaluation has shown the highly dynamic nature of the pulmonary lesions over time and a tendency to underestimate the lesion type and their severity using radiography.⁹⁰ Other radiographic changes include pleural effusion from fluid overload or a lobar alveolar pattern consistent with aspiration pneumonia.

Abdominal ultrasound examination often identifies abnormalities associated with the affected organ systems.^{71,91-93} Reported kidney changes include renomegaly, cortical and sometimes medullary hyperechogenicity, decreased corticomedullary definition, mild pyelectasia, a medullary band of hyperechogenicity, and perirenal fluid accumulation. Changes of the hepatobiliary system include hepatomegaly, diffuse hepatic hypoechogenicity, and thickening of the gallbladder wall. Peritoneal effusion, enlargement and hypoechogenicity of the pancreas, thickening of the gastric and less commonly intestinal wall, intestinal intussusception, splenomegaly with mottled echotexture, and abdominal lymphadenomegaly also may be observed.

3 | DIAGNOSIS

Leptospirosis should be considered a differential diagnosis in any dog evaluated for AKI, and especially when accompanied by hepatic dysfunction or evidence of pulmonary hemorrhage (see Case Definition). Although leptospirosis has been reported in dogs properly vaccinated using 4-serovar leptospirosis vaccines,⁹⁴ other differential diagnoses should be considered more likely in adequately vaccinated dogs (LOA 11/11). Leptospirosis should be considered in cats with AKI, ≥ 1 additional clinicopathologic findings suggestive of a systemic infection, and no other explanation for their clinical signs (LOA 10/10).

Specific diagnosis of leptospirosis is based on clinical suspicion together with the results of serologic tests and NAATs. **Because all available diagnostic tests have limitations, application of a combination of serologic assays and organism detection tests is recommended to optimize diagnosis of leptospirosis (LOA 12/12).**

The reference standard test for diagnosis of leptospirosis remains acute and convalescent serologic testing using the MAT. The report to the clinician lists the serovars tested and the serum titer at which 50% of organisms agglutinate as observed using darkfield microscopy. Veterinary diagnostic laboratories typically include a limited number (6 to 7) serovars. In contrast, panels used in reference laboratories for humans may include >30 different serovars, and it has been recommended that laboratories include both recent and locally circulating serovars.⁹⁵ Assays that include a large number of serovars are more sensitive, but more laborious to perform. The incubation period for leptospirosis is approximately 2 to 14 days, and in the first week of illness, titers are negative or low because of insufficient time for production of detectable antibody. Antimicrobial treatment early in the course of illness may suppress antibody production.⁹⁵ Thus, the sensitivity of a single acute MAT titer $>1:800$ in dogs has been estimated at only 50%.^{96,97} Conversely, unless very high ($>1:3200$), a single positive MAT titer lacks specificity and high titers in the first few days of illness should raise suspicion for recent previous vaccination, recent subclinical exposure, or longer duration of illness caused by *Leptospira* spp. infection than recognized by the owner. Such a situation should prompt consideration of alternative causes of illness. Titers can persist for at least 1 year after natural infection, and in 1 study, generally decreased by 4 months after vaccination.⁹⁸ Post-vaccinal titers may persist for longer and be maintained at high levels ($\geq 1:1600$), including titers to non-vaccinal serovars, if ongoing exposure to field strains occurs.⁹⁸ **Diagnosis of leptospirosis based on a single positive MAT test result is not recommended, and leptospirosis should not be ruled out based on a single negative test, especially when MAT**

includes a limited number of serovars (eg, 6 to 7 serovars; LOA 12/12). Although seroconversion (≥ 4 -fold change in titer) can occur as early as 3 to 5 days after dogs are presented to a veterinarian, an interval of 7 to 14 days is recommended between acute and convalescent phase samples to identify seroconversion (LOA 12/12).

Serological results should not be used to make firm conclusions about the infecting serovar because of paradoxical serologic cross-reactivity, especially early in the course of illness, and the potential for absence of the infecting serovar in the panel.^{14,41,95,99} Interlaboratory variation in MAT results and challenges associated with maintenance of cultures over time further complicate this issue. Inclusion of more serovars in a panel is recommended to increase the sensitivity of the assay, not to aid in identification of the infecting serovar. **To promote quality assurance for MAT testing, practitioners should submit samples to laboratories that participate in the International Leptospirosis Society's *Leptospira* proficiency testing platform (LOA 11/11).**¹⁰⁰

Point-of-care serologic tests based on lateral flow technology are available for rapid detection of antibodies to pathogenic leptospires in dogs.¹⁰¹ Studies from different geographic regions have yielded variable sensitivities and specificities for these assays in a clinical setting (Table 2), and positive and negative predictive values also will vary based on the estimated prevalence of *Leptospira* exposure in the tested dog population. As with MAT, these assays may be negative because of the lag in antibody production, or positive because of recent subclinical exposure or vaccination. The SNAP Lepto (IDEXX Laboratories, Inc, Portland, Maine) assay detects antibodies to the *Leptospira* membrane protein LipL32.¹⁰² An 83.2% agreement between this assay and MAT was observed when MAT titers were $\geq 1:800$; specificity was 96%.¹⁰² Similar to the MAT, the assay detects vaccinal antibodies up to 1 year post-vaccination.¹⁰² The WITNESS Lepto Rapid Test (Zoetis, Parsippany, New Jersey) is a point-of-care assay that detects IgM antibodies to whole cell extract from *L. kirschneri* serovar Grippotyphosa and *L. interrogans* serovar Bratislava.^{103,104} Detection of vaccinal antibodies was noted in 24% of vaccinated dogs at 12 weeks post-vaccination.¹⁰⁴ To date, studies of the clinical specificity of this assay suggest that a positive IgM result in an unvaccinated dog with signs consistent with leptospirosis strongly supports a diagnosis of leptospirosis (specificity > 97%; Table 2).¹⁰⁴⁻¹⁰⁶ However, because the sensitivity and specificity of these assays may vary regionally depending on circulating strains, more validation studies are needed from different geographic regions in dogs with leptospirosis before point-of-care antibody detection immunoassays can be recommended over MAT for diagnosis of leptospirosis. If antibodies are detected, quantification of the antibody titer using MAT is recommended as part of acute and

convalescent phase titer evaluation to document recent exposure. A negative result with any point-of-care antibody detection assay does not rule out leptospirosis, and should be followed with a second antibody test, 7 to 14 days later, to document seroconversion (LOA 12/12).

Nucleic acid amplification tests can detect *Leptospira* DNA in blood or urine early in the course of disease, before a serologic response occurs.¹⁰⁸ **To optimize sensitivity of NAATs, specimens should be collected before administration of antibiotics. Also, both blood and urine should be submitted (LOA 12/12).** In humans, the leptospiremic phase of infection is very brief. When evaluated using blood, 1 assay had a sensitivity of 86% during the first 6 days of illness, which decreased to 34% after 7 days of illness.¹⁰⁹ In dogs with leptospirosis, the sensitivity of a different PCR assay was 9/42 (21%) when applied to blood or urine or both.¹⁰⁵ In another study, the sensitivity of PCR on blood and urine in dogs was 25% and 69%, respectively; specificity was 100% for both sample types.¹¹⁰ Some assays do not detect P2 species.¹⁰⁸ Negative urine NAAT results also may result from intermittent urinary shedding or the presence of inhibitors of nucleic acid amplification. Heparin can interfere with molecular assays, so blood should be collected into EDTA tubes. The stability of DNA may be adversely affected by storage; for submissions to the Centers for Disease Control and Prevention (CDC), urine specimens should be tested within 3 days of storage at 4°C, blood within 14 days at 4°C, and both urine and blood samples within 28 days of storage at -20°C, with a maximum of 3 freeze-thaw cycles.¹¹¹ Proficiency testing programs for laboratories that perform *Leptospira* PCR are available in some countries.¹¹² **Provided laboratory quality control is appropriate, a positive NAAT test result on blood in conjunction with consistent clinical signs is diagnostic for leptospirosis (see Case Definition). A negative result on blood or urine should not rule out leptospirosis. Because the DNA of pathogenic leptospires can be found in the urine of up to 20% of apparently healthy dogs,¹¹³⁻¹¹⁶ a positive NAAT test on urine must be interpreted in conjunction with clinical signs and the results of other diagnostic tests (LOA 12/12).** Vaccination with inactivated *Leptospira* vaccines should not lead to positive PCR assay results.¹¹⁷

Other organism detection tests include darkfield microscopy and culture. Darkfield microscopy and culture have low sensitivity, and require technical expertise for proper interpretation, and thus are not recommended for routine diagnosis, although culture and serotyping may be valuable to inform prevention strategies in outbreak investigations (LOA 12/12). Culture requires inoculation of special media, ideally at point-of-care, and laboratory expertise is required for subsequent isolation and identification of *Leptospira* spp.

TABLE 2 Clinical sensitivities and specificities of currently available point-of-care immunoassays for detection of anti-*Leptospira* antibodies.

Location	Point-of-care test	Sensitivity	Specificity	Reference
Northeastern US	IDEXX SNAP Lepto	15/22 (68%)	111/131 (85%)	¹⁰⁷
Germany	Zoetis WITNESS	28/37 (76%)	59/60 (98.3%)	¹⁰⁴
Italy	Zoetis WITNESS	30/42 (71%)	36/36 (100%)	¹⁰⁵
	IDEXX SNAP Lepto	33/42 (79%)	26/36 (72%)	
Switzerland	Zoetis WITNESS	31/41 (76%)	28/28 (100%)	¹⁰⁶

Although the sensitivity of culture has been considered low and prolonged incubation times have been required, improvements in media and patient-side media inoculation have been associated with increased yields after incubation times as short as 24 to 72 hours.¹¹⁸ In the future, whole genome sequencing methods such as selective whole genome amplification may allow for diagnosis and sequence typing in outbreak investigations, without the need for culture. However, until vaccines are available that provide immunity that is not serovar-specific, culture and serotyping is required to inform vaccine selection.

Because of the characteristic patterns of laboratory abnormalities in leptospirosis, the disease lends itself well to diagnosis using machine learning. An algorithm for early diagnosis of leptospirosis that took into account CBC, serum biochemistry and urinalysis findings had a sensitivity of 100% and a specificity of 91% when applied to the hospital population at the University of California-Davis; specificity increased to 93% when a MAT titer obtained at patient intake was included in the model.⁹⁷ Efforts to refine such algorithms to enhance the early recognition of leptospirosis are encouraged.

3.1 | Case definition for leptospirosis in dogs

The following clinical and laboratory criteria have been developed as a case definition for leptospirosis in dogs (based on the CDC case definition for leptospirosis in humans¹¹⁹). A probable case meets the clinical criteria AND has ≥ 1 supportive laboratory criteria. A confirmed case meets the clinical criteria AND has ≥ 1 confirmatory laboratory criteria (LOA 12/12).

3.1.1 | CLINICAL CRITERIA

1. Onset of systemic illness (nonspecific fever, lethargy, polyuria, polydipsia, anorexia, or some combination of these signs) within the past 2 weeks, with or without other clinical signs suggestive of leptospirosis:
 - a. Gastrointestinal (vomiting, diarrhea, abdominal pain)
 - b. Pulmonary (tachypnea, cough, hemoptysis)
 - c. Ocular (uveitis, conjunctivitis, scleral injection, punctate retinal hemorrhages)
 - d. Clinical suspicion for AKI (oliguria/anuria)
 - e. Icterus
 - f. Hemorrhage (ecchymoses, petechiae, epistaxis, hematuria, melena, hematemesis)

AND

2. Two or more of the following clinicopathologic abnormalities:
 - a. Neutrophilic leukocytosis, with or without a left shift
 - b. Thrombocytopenia
 - c. Biochemical evidence of AKI (eg, isosthenuria together with increased serum creatinine or symmetric dimethyl arginine [SDMA] concentrations or both)

- d. Biochemical evidence of cholestatic hepatopathy
- e. Biochemical evidence of pancreatitis (increased serum pancreatic lipase or DDGR-lipase activity)
- f. Increased CK activity
- g. Glucosuria despite normoglycemia
- h. Active urine sediment (pyuria or granular casts)
- i. Radiographic findings consistent with pulmonary hemorrhage syndrome
- j. Abdominal ultrasonographic findings consistent with leptospirosis (findings supportive of pancreatitis, hyperechoic renal cortices, perirenal fluid)
- k. ECG-documented cardiac arrhythmias or increased serum troponin concentration

3.1.2 | SPECIFIC LABORATORY CRITERIA

Diagnostic testing should be performed in dogs that meet clinical criteria. Although a history of potential exposure (predation, exposure to other animal species or water sources) should increase suspicion for leptospirosis, all dogs should be considered at risk, regardless of signalment, geographic region, and lifestyle.

Supportive:

- a. *Leptospira* MAT titer ≥ 800 in ≥ 1 serum specimens
- b. Detection of IgM antibodies against *Leptospira* in an acute phase serum specimen
- c. Detection of pathogenic leptospires in urine using a NAAT
- d. Visualization of spirochetes in a blood or urine specimen using darkfield microscopy by a *Leptospira* reference laboratory

Confirmatory:

- a. Fourfold or higher increase in *Leptospira* agglutination titer at a single laboratory between acute- and convalescent-phase serum specimens
- b. Detection of pathogenic leptospires in blood using a NAAT
- c. Isolation of *Leptospira* from a clinical specimen by a *Leptospira* reference laboratory

4 | TREATMENT AND PROGNOSIS

Treatment of leptospirosis in dogs includes specific antimicrobial therapy and care of the individual organ systems affected to allow for repair, functional recovery, and survival. Depending on the grade of organ damage and dysfunction, interventions range from simple monitoring to supportive care, and in severe cases to temporary organ replacement (eg, dialysis) as a bridge to recovery.

4.1 | Antimicrobial therapy

Based on the marked morbidity and potential mortality of the disease, and the risk of zoonotic transmission, as recommended for

humans by the CDC,¹²⁰ dogs with suspected or probable leptospirosis should be treated with appropriate antimicrobials (LOA 12/12), despite lack of evidence for a clear benefit for affected humans.¹²¹ The optimal antimicrobial treatment for leptospirosis is unknown. However, the sequential combination of initial treatment with an IV penicillin derivative to suppress bacteremia followed by PO doxycycline to avoid intra-renal persistence has been the traditional strategy in both humans and dogs with leptospirosis.^{1,50} The justification for an initial penicillin-based therapy is the poor tolerance to PO doxycycline in animals with leptospirosis in which the clinical picture is dominated by gastrointestinal signs. Other antimicrobials with activity against leptospires (reviewed in the 2010 Consensus Statement)¹ are either less efficacious in clearing organisms from kidney tissue in rodent models, or are critical antimicrobials reserved in some countries for treatment of resistant bacterial infections in humans. Based on these data, **dogs with leptospirosis should be treated with doxycycline at a dosage of 5 mg/kg q12h PO for 2 weeks. Treatment should not be delayed pending results of diagnostic testing for leptospirosis. The optimal duration of antimicrobial treatment requires further investigation. If vomiting or other adverse reactions preclude doxycycline administration, dogs with leptospirosis should be treated initially with ampicillin (20-30 mg/kg IV q6-8h), amoxicillin (20-30 mg/kg IV q6-8h), or penicillin G (25 000-40 000 U/kg IV q6-8h; LOA 11/11). For penicillins, the panel recommends doubling the administration interval in dogs with AKI International Renal Interest Society (IRIS) Grade 4 and higher (serum creatinine concentration >440 µmol/L or >5 mg/dL; LOA 10/11 [1 reviewer recommended that interval adjustments be made based on kidney function regardless of AKI grade]).**¹²²

4.2 | Supportive care

Treatment of organ dysfunction from leptospirosis is consistent with recommendations for other etiologies, prioritizing appropriate fluid, electrolyte, acid-base, and blood pressure management and support of gastrointestinal disturbances using antiemetics and gastroprotectants, as described in the 2010 Consensus Statement.¹ Early and proactive nutritional support, individualized pain management, supplemental oxygen therapy, mechanical ventilation, and short-term kidney replacement therapy in severe cases are additional management requirements in selective patients. Attention should be taken to avoid iatrogenic fluid overload, which exacerbates organ dysfunction and leads to additional complications.¹²³ Pulmonary manifestations in dogs with leptospirosis further limit tolerance to iatrogenic fluid excess.⁸⁹ Diuretics may increase urine production in AKI but are ineffective and even detrimental for prevention and treatment of AKI.¹²⁴ Their use should be limited to support volume management and increase potassium excretion in oliguric patients. Dogs with non-oliguric kidney failure may be markedly polyuric; some patients may require fluid rates >20 mL/kg/h to prevent hypovolemia. Blood pressure should be monitored at least twice daily in the initial phase of the

disease and persistent hypertension not responsive to appropriate analgesia and volume correction should be treated using amlodipine (0.25-0.75 mg/kg/d, PO). Opioids are usually appropriate for pain control; non-steroidal anti-inflammatory drugs are not recommended. The use of diets for patients with kidney disease may not provide the protein needs of animals recovering from leptospirosis-induced AKI, and the fat content of kidney diets may predispose to or exacerbate concurrent pancreatitis. **Although the ideal food composition has not been defined, dogs with suspected or confirmed leptospirosis should be fed a highly digestible, normal-to-high protein diet with sufficient energy content to support gastrointestinal recovery and minimize catabolism as early as possible (LOA 10/10).** The use of naso-esophageal, esophageal, or esophago-jejunal feeding tubes facilitates efficient and early nutritional support with minimal risk of complications.

In dogs with hepatic dysfunction, consideration could be given to management of oxidative injury and inflammation using S-adenosyl methionine, silymarin, or vitamin E. However, there are no reported trials of these agents in patients with leptospirosis, and choleretics such as ursodeoxycholic acid have the potential for harm given current understanding of the disease's pathogenesis. **More evidence is needed before supplements such as S-adenosyl methionine, silymarin, vitamin E, or ursodeoxycholic acid can be recommended for treatment of leptospirosis (LOA 11/11).**

The therapeutic approach to the hemostatic disorders in dogs with leptospirosis varies based on the suspected dominant mechanism of the coagulopathy in an individual patient based on coagulation testing. Treatments may include replacement of consumed clotting factors with transfusions of fresh frozen plasma, which may require plasma exchange to prevent hypervolemia. A proactive approach should be considered in animals with leptospirosis, especially in the presence of hepatopathy, uremic thrombocytopathy, gastrointestinal ulceration, pulmonary hemorrhage, and systemic hypertension, when bleeding complications can become rapidly fatal. The use of desmopressin to facilitate von Willebrand factor release from the endothelium has shown benefit in humans with uremic thrombocytopathy, although it has the potential for adverse effects such as hyponatremia and arterial thromboembolic events.¹²⁵ Neither desmopressin nor pulse dexamethasone treatment showed benefit for treatment of humans with LPHS in a randomized clinical trial.¹²⁶

4.3 | Extracorporeal kidney support therapy

Leptospirosis is 1 of the most frequent etiologic indications for extracorporeal kidney support therapy (EKST), having a high potential for successful outcome.¹²⁷ The indications for hemodialysis are prioritized to resolve hyperkalemia, severe azotemia, fluid imbalance, metabolic acidosis, and the cumulative systemic comorbidities attending progressive AKI. Early hemodialysis has been associated with increased survival and shorter hospital stays in humans with leptospirosis.¹²⁸ **Early dialytic intervention is recommended to prevent the morbidity of AKI rather than as a delayed salvage for failed**

conventional management. Early referral to centers providing EKST should be considered for dogs in IRIS AKI Grade 4, when serum creatinine concentration exceeds 5 mg/dL (440 μ mol/L; LOA 11/11). Extracorporeal kidney support therapy extends the window for recovery by restoring fluid, electrolyte and acid-base balances, the opportunity for nutritional support, and establishing an acceptable quality of life during the critical phase of kidney failure. More than 1 to 2 weeks of dialytic support rarely are required. A study of 36 dogs with leptospirosis reported >80% recovery in dogs with severe AKI treated with EKST after failing prior conservative medical management.⁶⁷ Both intermittent hemodialysis and continuous hemodialysis platforms have been used successfully in dogs with leptospirosis.^{67,129} With the incorporation of a hemoperfusion cartridge in the extracorporeal circuit, cytokines, and even pathogens or their products may become therapeutic targets.¹³⁰ Alternatively, plasma separated from the circulating blood by continuous flow centrifugation or by membrane filtration can be treated using adsorptive techniques or replaced with fresh frozen plasma from healthy donors (therapeutic plasma exchange) to modulate the exaggerated immune response of the animal to the pathogen.¹³¹ This approach has been applied successfully to human patients¹³² and results are promising in dogs with severe leptospirosis.¹³³

4.4 | Monitoring response to treatment

At a minimum, consideration should be given to performing a serum biochemistry panel in dogs with acute leptospirosis every 24 hours during hospitalization to monitor kidney function, bilirubin concentration, liver enzyme activities, serum protein concentrations, C-reactive protein, and electrolyte and acid-base status. Consideration also should be given to monitoring packed cell volume every 24 hours, and the CBC every 48 hours during hospitalization (LOA 10/10). Urine production can be measured using a closed urine collection system or, to decrease the risk of nosocomial urinary tract infection, frequent monitoring of body weight (eg, every 3 hours for anuric or severely polyuric dogs). Serial physical examinations with monitoring of body weight, blood pressure, respiratory rate, lung sounds, and possibly thoracic imaging are indicated to assess for early signs of overhydration. Initially, urine output should be monitored or estimated at least every several hours. Administered fluid volumes should be adjusted accordingly to prevent overhydration. **Referral to a 24-hour care facility is recommended if adequate monitoring is not available within the practice (LOA 11/11).** For dogs requiring urinary catheterization, indwelling, rather than intermittent, urinary catheterization is recommended to decrease the risk of exposure of attending staff to infective urine. Once azotemia resolves or stabilizes and the patient can maintain hydration and vascular volume, IV fluid therapy should be gradually tapered and then discontinued. After at least 7 days from the onset of illness, consideration should be given to obtaining convalescent MAT titers before discharge from hospital to increase the likelihood of follow-up testing.

Dogs should be re-examined no later than 1 week after discharge, at which time a CBC, serum biochemistry panel, urine specific gravity should be performed. If not obtained at discharge, convalescent MAT titers should be considered at this time. Dogs recovering from severe forms of AKI often show various degrees of permanent loss of kidney function and should be monitored and managed appropriately for their IRIS Stage of chronic kidney disease.¹³⁴

Treatment typically is associated with gradual return of serum urea, SDMA, and creatinine concentrations to reference ranges within 10 to 14 days. Regeneration of kidney tissue may continue for weeks to months, and residual damage may remain long-term. The serum bilirubin concentration decreases more slowly than activities of serum ALT and ALP. Platelet counts often improve within 1 week of initiating antimicrobial treatment. C-reactive protein concentrations decrease within 4 to 10 days of antimicrobial treatment; serial monitoring is recommended in animals with slow recoveries or ongoing comorbidities. A delay in normalization of C-reactive protein concentration may indicate secondary inflammatory or infectious complications and justifies re-evaluation with additional diagnostic testing.⁷²

5 | PROGNOSIS

Negative prognostic factors in dogs include hyperbilirubinemia and hypocoagulability.¹³⁵ Negative prognostic findings in humans include oliguria, a combination of hyperbilirubinemia and high serum creatinine concentration, respiratory complications, hypocoagulability, and severe thrombocytopenia; icterus alone may not be a negative prognostic finding.^{136,137} In 254 dogs with acute leptospirosis, a serum bilirubin concentration of at least 10 μ mol/L (0.6 mg/dL) was strongly associated (odds ratio [OR], 16.4; $P < .001$) with death or euthanasia.⁴⁹ Leptospiral pulmonary hemorrhage syndrome has been associated with mortality of up to 70%^{48,49} although mild forms exist that can resolve with antimicrobial treatment. Normalization of C-reactive protein with treatment parallels a favorable clinical course of the disease.⁷² A clinical scoring system has been developed and validated for dogs with AKI managed with EKST; higher scores are associated with poorer outcomes.^{138,139} For dogs treated using EKST (and not for other dogs with leptospirosis), this model could be used cautiously as a tool for therapeutic decision making. Of several models developed (A through D), Segev's model C, using a cut-off score of 19.9, has demonstrated the optimal combination of sensitivity and specificity, correctly predicting survival outcomes in 80% to 87% of dogs (Table 3).¹³⁸⁻¹⁴⁰ A diagnosis of leptospirosis was reported in 21%-31% of dogs in these studies. Model C includes a weighting factor for leptospirosis (−8.47), which improves likelihood of survival. This model was applied to a cohort of 40 dogs with AKI treated in Italy with EKST, 5 of which had leptospirosis.¹⁴⁰ Negative prognostic factors in this study were anuria, respiratory complications, disseminated intravascular coagulation, pancreatitis, and IRIS grade of AKI.

TABLE 3 Outcome prediction model for dogs with AKI managed with hemodialysis, incorporating scores when leptospirosis and ethylene glycol (EG) status are known (model C).¹³⁹

Variable	Range (score) ^a		
Body weight (kg)	>36 (+1.00)	27.2-36.0 (+1.61)	≤27.1 (+2.73)
Red blood cells ($\times 10^6$ cells/ μ L)	>4.93 (+1.00)	3.54-4.93 (+1.51)	≤3.53 (+3.61)
Lymphocyte count (cells/ μ L)	>1000 (+1.00)	510-999 (+1.69)	≤509 (+3.44)
Creatinine (mg/dL)	≤13.2 (+1.00)	>13.2 (+2.26)	
Phosphorus (mg/dL)	≤18.2 (+1.00)	>18.2 (+3.13)	
Ionized calcium (mmol/L)	>1.1 (+1.00)	0.87-1.1 (+1.99)	<0.86 (+4.16)
Anion gap (mmol/L)	≤18.2 (+1.00)	>18.2 (+2.74)	
Albumin (g/dL)	>1.9 (+1.00)	≤1.9 (>2.52)	
Alanine aminotransferase (U/L)	<210 (+1.00)	≥210 (−2.43)	
Urine production (mL/kg/h)	>1.31 (+1.00)	0.1-1.31 (+1.44)	0 (+5.55)
Respiratory system involvement	No (+1.00)	Yes (+2.48)	
Neurological involvement	No (+1.00)	Yes (+3.76)	
Disseminated intravascular coagulation	No (+1.00)	Yes (+2.3)	
Etiology (for dogs with known leptospirosis and EG status)	Not leptospirosis or EG toxicity (+1.00)	Leptospirosis (−8.46)	EG toxicity (+2.3)

^aScores for each variable are added (or subtracted as designated) to calculate the final predictive score. Scores > 19.9 suggest severe disease and are correlated with poor outcome. Because predictions can be inaccurate when applied to individual dogs, they should be used cautiously as a guide for therapeutic decision-making but should not be used to discourage owners from pursuing treatment.

6 | PREVENTION

Currently, bacterin vaccines containing serovars Icterohaemorrhagiae, Canicola, Grippotyphosa, and Pomona are available in North America for prevention of leptospirosis in dogs. Quadrivalent vaccines containing serovars Icterohaemorrhagiae, Canicola, Grippotyphosa, and Australis are available in Europe. Monovalent and bivalent vaccines for serogroups Icterohaemorrhagiae or Canicola or both remain available in many geographic locations including North America, Europe, South Africa, and Australia, but may not be adequate to protect against the serovars commonly found in those regions. Trivalent vaccines also are available in some regions, such as Europe and South America. Current vaccines can prevent disease resulting from experimental challenge and can decrease shedding of vaccinal serovars. A recent systematic review and meta-analysis of experimental trials of 21 commercially available vaccines found >80% protection against clinical disease and kidney carrier status in dogs (studies of vaccines designed for dogs in hamsters, guinea pigs, and other mammalian species were excluded).³⁷ However, trials typically involved use of high doses of leptospires administered intraperitoneally, conditions which do not mimic natural exposure. Vaccines protect for at least 12 months,¹⁴¹⁻¹⁴³ with several manufacturers providing product guarantee for 15 months after proper administration. Currently available bacterins elicit serogroup-specific immunity, although partial immunity to heterologous serogroups has been documented in some studies.^{1,144,145} Leptospirosis in dogs that have been fully vaccinated with 4-serovar vaccines has been documented,^{6,94} consistent with <100% efficacy of bacterins, but infections appear to be uncommon. Nevertheless, published data is limited regarding the incidence of naturally

occurring leptospirosis (clinical or asymptomatic shedding) in such dogs. This situation may partly relate to the difficulty in definitively diagnosing leptospirosis in fully vaccinated dogs.

Leptospirosis vaccines require 2 initial injections spaced 4 weeks apart, which can be started in puppies at 12 weeks of age or later. Leptospirosis vaccines have similar immunological adverse effects as do other parentally administered vaccines.^{146,147} Patient factors such as breed and size can influence the risk of vaccine-associated adverse events, regardless of the antigen source. Research approximately 2 decades ago indicated that some vaccines for dogs that included a *Leptospira* component contained high concentrations of bovine serum albumin, which could account for post-vaccinal IgE-based adverse events.¹⁴⁸ More recent research indicates protein content, concentrations, and severe adverse event rates are not higher for leptospirosis vaccines than distemper-parvovirus or rabies vaccines.^{147,149} **Vaccines should be administered annually to all dogs starting at 12 weeks of age, regardless of breed, because leptospirosis is a zoonotic disease, can be severe or fatal despite treatment, and exposure can occur regardless of age, geography, or lifestyle. Because subclinical shedding has been documented in shelter dogs,¹¹³⁻¹¹⁵ initial and booster vaccinations, spaced 3 weeks apart, should be administered to shelter dogs at intake. Leptospirosis vaccination should be required for dogs by boarding or daycare facilities, because outbreaks have occurred in association with such facilities.²⁶⁻²⁸ In the absence of culture and serotyping information to determine the serovars causing disease in dogs in a region, vaccines containing the broadest array of serovars available should be used. Results of MAT-based serosurveys should not be used to guide vaccine selection when multiple**

vaccine types are available. There is no published evidence that seasonal timing of vaccination is important (LOA 12/12).

No leptospiral vaccines are currently approved for cats, nor is the use of biologicals for dogs currently recommended for cats.

Evidence of recurrent leptospirosis in dogs after proper treatment is lacking. Nevertheless, vaccination is recommended as soon as possible after recovery from leptospirosis because (1) such dogs are at risk of ongoing exposure to the same or other serogroups, and (2) it is unknown whether or not life-long immunity results from natural infection (LOA 12/12). More studies are required to establish the true duration of immunity and degree of cross protection among specific serovars after natural infection in dogs.

Other methods of prevention include decreased access to potential sources of infection, such as marshy areas and standing water, and minimizing contact with wildlife and domestic animal reservoir hosts using fencing and rodent control.

7 | PUBLIC HEALTH IMPLICATIONS

Leptospirosis in humans most often is subclinical or presents as an influenza-like illness that occurs after an incubation period of 3 to 30 days.¹⁵⁰ Transplacental infection during pregnancy can cause abortion or stillbirth. The most severe manifestations of leptospirosis in humans are hepatic and kidney failure (Weil's disease) or LPHS.¹⁵⁰ Readers are referred to the CDC website for more information about the disease in humans.¹⁵¹

Globally, leptospirosis in humans is most prevalent in regions with high humidity, rainfall, and flooding.¹⁵⁰ Globally, rodents are the main source of infection, although exposure to spirochetes shed by other wildlife species and production animal reservoir hosts also contributes to the disease in humans. Free-roaming dogs may represent a reservoir of infection for humans,¹⁵² although when both free-roaming dogs and rodents are present, isolates may be shared between rodents and dogs, with rodents being the main contributor to infection of humans.⁴⁰ Contact with adopted wild and pet rodents also has resulted in disease in humans.¹⁵³⁻¹⁵⁵

In developed countries, most exposure occurs because of recreational activities that involve water, or occupations that result in exposure to production animal reservoir hosts, wildlife, or contaminated water sources.¹⁵⁰ Increased rodent exposure resulting from homelessness, such as occurred after the COVID-19 pandemic or flooding associated with climate change, has the potential to contribute to emergence of leptospirosis in humans in developed countries.¹⁵⁶ In 2021, increased numbers of cases of leptospirosis in humans in New York City compared to previous years were thought to be the effect of decreased rodent control during the SARS-CoV-2 pandemic.¹⁵⁷

Transmission from sick animals with leptospirosis (ie, incidental hosts) to other animals is rarely reported.¹⁵⁸ The few reports¹⁵⁹⁻¹⁶² suggesting transmission of pathogenic leptospires from pet dogs to humans have not been substantiated using molecular methods, although transmission from a sick dog to a child in the household

recently was documented, likely because of handling of contaminated urine.¹⁶³

Although the potential exists for zoonotic transmission of pathogenic leptospires from sick dogs with leptospirosis to humans, the risk of such transmission appears to be low, especially when basic precautions are taken (LOA 12/12). In an investigation by the CDC, no evidence of zoonotic transmission was identified during an outbreak of leptospirosis in dogs in Arizona with high-risk exposures for humans.¹⁶⁴ Serosurveys of veterinarians, veterinary students, and rehabilitation workers handling wildlife potentially infected with leptospires found no seroreactivity in veterinarians and veterinary students; only 2 of 213 rehabilitation workers tested positive, with titers of 1:200 to a single serovar.¹⁶⁵⁻¹⁶⁷

7.1 | Veterinary healthcare workers

The risk of zoonotic transmission of leptospires in a small animal clinic can be minimized when veterinary staff have a high index of suspicion for leptospirosis in dogs with consistent clinical signs and appropriate handling precautions are implemented. Anecdotal evidence suggests it is difficult to detect leptospires using NAATs in the urine of dogs receiving penicillin or doxycycline treatment, so appropriate antimicrobial treatment also should decrease the possibility of zoonotic transmission.¹⁶⁸ Positive PCR results detected in animals receiving antimicrobials also may represent non-viable organisms. **All dogs with AKI should be suspected to have leptospirosis until an alternate diagnosis has been made, or if no other diagnosis is made, until 48 hours of appropriate antimicrobial treatment has been administered. However, given that apparently healthy dogs can shed pathogenic leptospires,¹¹⁴ standard hygiene precautions that decrease transmission of zoonotic pathogens in veterinary clinic environments, as defined by the National Association of State Public Health Veterinarians,¹⁶⁹ are recommended regardless of the presence or absence of illness (LOA 12/12).**

During the first 48 hours of treatment, movement of suspected or confirmed cases around the hospital should be minimized, and areas of contact disinfected promptly. Warning labels should be placed on cages, and pregnant humans should avoid contact with these patients. **Because leptospires are not easily transmitted between dogs (and between dogs and people), hospitalization in an isolation ward is not required, and it has the potential to negatively impact the level of care required for many critically ill dogs with leptospirosis (LOA 10/10).** If possible, patients should be placed in floor-level cages and housed away from high traffic areas. Care should be taken to avoid needle-stick injuries. Gloves, a waterproof disposable gown, and full-face protection (such as using a face shield) should be worn if aerosolization of urine is possible. Pressure washing of runs should be avoided. If a urinary catheter is not in place, dogs should be walked frequently enough that urination does not occur within the hospital. Patients should be taken to urinate in a restricted area, preferentially an area without moisture or water accumulation and with good drainage and exposure to ultraviolet light. Urine spills should be

immediately cleaned and disinfected. Hand hygiene should be performed before and after handling each patient after glove removal, and cages cleaned and disinfected daily. Normal laundering of bedding will inactivate leptospires, but individuals handling soiled bedding should wear protective clothing. Disposable bedding should be placed in biohazard bags and handled appropriately.

Although all routine hospital disinfectants are active against leptospires, large volumes of urine in collection vessels can be inactivated by 1:1 dilution with 10% bleach (5000 ppm sodium hypochlorite), made fresh on the day of use. In dogs with indwelling urinary catheters, disinfectant should be injected directly into the collection bag before disposal (after removal from the patient).

All personnel who may have direct or indirect contact with a dog suspected to have leptospirosis should be informed of the risk. These include radiology personnel and laboratory personnel handling blood, urine, or tissue specimens from patients. Local public health agencies or the CDC can be contacted for guidance if additional questions arise regarding the public health risks and zoonotic transmission of leptospirosis or if an exposure occurs. Further information can be found on the CDC webpage on Leptospirosis for Healthcare Workers.¹⁷⁰

7.2 | Precautions in the home environment

Because leptospirosis usually does not commence until 7 to 10 days after infection, dogs in the first few days of illness (before veterinary care is sought) may not represent a clinically relevant source of zoonotic infection. Treated dogs returned to the home environment also represent a low risk to household members. Nevertheless, **until 48 hours of treatment with doxycycline has been completed, owners should avoid contact with their dog's urine and wear gloves and eye protection when cleaning up urine. Veterinarians should educate owners of affected animals about the zoonotic risk of leptospirosis, and recommend they contact their medical practitioner if they have questions about the disease in humans (LOA 12/12).** Owners should be informed that their dog likely contracted leptospirosis through ongoing direct or indirect contact with rodents, wildlife, or farm animals, and that they also may be at risk from such sources. Owners can be directed to the CDC's webpage on Leptospirosis in Pets for additional information.¹⁷¹ Routine vaccination of pet dogs is recommended to decrease the risk of zoonotic transmission of the disease, either by direct or indirect transmission.⁴⁰

Subclinical seroconversion has been documented in some dogs living in the same household with dogs with leptospirosis, possibly because of common exposure. **Because of the zoonotic potential of leptospirosis, after risk assessment, practitioners should consider prophylactic treatment of other dogs in the household that may have been coincidentally exposed, ideally with monitoring of acute and convalescent phase antibody titers (LOA 12/12).** The recommended treatment is doxycycline, 5 mg/kg q12h PO for 14 days. More evidence is needed before prophylactic treatment can be routinely

recommended for other apparently healthy animals in an exposure situation, such as cats, but a One Health approach to outbreak investigations is encouraged (LOA 12/12). The extent of urinary shedding in such exposed pets, if it occurs at all, requires further study.

ACKNOWLEDGMENT

No funding was received for this study. The authors acknowledge Renee L. Galloway, BS, MPH, Microbiologist, Centers for Disease Control and Prevention, Atlanta, GA, USA; David A. Haake, MD, Health Sciences Clinical Professor, David Geffen School of Medicine, University of California-Los Angeles, CA, USA; Michael R. Lappin, DVM, PhD, DACVIM(SAIM), Professor, Colorado State University, CO, USA; Jarlath Nally, PhD, National Animal Disease Center, Agriculture Research Service, USDA, Ames, IA, USA; Gilad Segev, DVM, DACVIM-CA, Koret School of Veterinary Medicine, The Hebrew University of Jerusalem, Rehovot, Israel; and Jason Stull, VMD, MPVM, PhD, DACVPM, The Ohio State University, Columbus, OH, USA and the University of Prince Edward Island, Charlottetown, Canada.

CONFLICT OF INTEREST DECLARATION

Thierry Francey received financial support from MSD Animal Health to hire support staff for data collection toward retrospective analysis of canine leptospirosis (2017-2020). Jane Sykes received speaking honoraria and research support from Elanco, Boehringer Ingelheim, Merck, Zoetis, and IDEXX. No other authors declare a conflict of interest.

OFF-LABEL ANTIMICROBIAL DECLARATION

Authors declare no off-label use of antimicrobials.

INSTITUTIONAL ANIMAL CARE AND USE COMMITTEE (IACUC) OR OTHER APPROVAL DECLARATION

Authors declare no IACUC or other approval was needed.

HUMAN ETHICS APPROVAL DECLARATION

Authors declare human ethics approval was not needed for this study.

ORCID

Jane E. Sykes  <https://orcid.org/0000-0002-6814-9835>

Thierry Francey  <https://orcid.org/0000-0002-6693-5365>

REFERENCES

1. Sykes JE, Hartmann K, Lunn KF, Moore GE, Stoddard RA, Goldstein RE. 2010 ACVIM small animal consensus statement on leptospirosis: diagnosis, epidemiology, treatment, and prevention. *J Vet Intern Med*. 2011;25:1-13.
2. Stull JW, Evason M, Weese JS, Yu J, Szlosek D, Smith AM. Canine leptospirosis in Canada, test-positive proportion and risk factors (2009 to 2018): a cross-sectional study. *PLoS One*. 2022;17:e0270313.
3. Raghavan RK, Brenner KM, Higgins JJ, Shawn Hutchinson JM, Harkin KR. Neighborhood-level socioeconomic and urban land use risk factors of canine leptospirosis: 94 cases (2002-2009). *Prev Vet Med*. 2012;106:324-331.

4. White AM, Zambrana-Torrel C, Allen T, et al. Hotspots of canine leptospirosis in The United States of America. *Vet J*. 2017;222:29-35.
5. Alton GD, Berke O, Reid-Smith R, Ojkic D, Prescott JF. Increase in seroprevalence of canine leptospirosis and its risk factors, Ontario 1998-2006. *Can J Vet Res*. 2009;73:167-175.
6. Francey T, Schweighauser A, Reber A, Schuller S. Evaluation of changes in the epidemiology of leptospirosis in dogs after introduction of a quadrivalent antileptospiral vaccine in a highly endemic area. *J Vet Intern Med*. 2020;34:2405-2417.
7. Smith AM, Stull JW, Moore GE. Potential drivers for the re-emergence of canine leptospirosis in the United States and Canada. *Trop Med Infect Dis*. 2022;7:7.
8. Taylor C, Brodbelt DC, Dobson B, Catchpole B, O'Neill DG, Stevens KB. Spatio-temporal distribution and agroecological factors associated with canine leptospirosis in Great Britain. *Prev Vet Med*. 2021;193:105407.
9. Rubanick JV, Fries RC, Waugh CE, Pashmakova MB. Severe hyperkalemia presenting with wide-complex tachycardia in a puppy with acute kidney injury secondary to leptospirosis. *J Vet Emerg Crit Care*. 2016;26:858-863.
10. Muller C, Gaguere E, Muller A, et al. Localized cutaneous calcinosis associated with leptospirosis in a 4-month-old beagle puppy. *Can Vet J*. 2022;63:1027-1031.
11. Rissi DR, Brown CA. Diagnostic features in 10 naturally occurring cases of acute fatal canine leptospirosis. *J Vet Diagn Invest*. 2014;26:799-804.
12. Taylor E. We agree, don't we? The Delphi method for health environments research. *Herd*. 2020;13:11-23.
13. Vincent AT, Schiettekatte O, Goarant C, et al. Revisiting the taxonomy and evolution of pathogenicity of the genus *Leptospira* through the prism of genomics. *PLoS Negl Trop Dis*. 2019;13:e0007270.
14. Sykes JE, Gamage CD, Haake DA, Nally JE. Understanding leptospirosis: application of state-of-the-art molecular typing tools with a One Health lens. *Am J Vet Res*. 2022;83:1-8.
15. List of prokaryotic names with standing in nomenclature (LPSN). Genus *Leptospira*. <https://www.bacterio.net/genus/Leptospira>. Accessed August 15, 2023.
16. Abdul Rahman MS, Khor KH, Khairani-Bejo S, Lau SF, Mazlan M, Roslan MA. Risk and predictive factors of leptospirosis in dogs diagnosed with kidney and/or liver disease in Selangor, Malaysia. *Animals (Basel)*. 2021;11:11.
17. Boey K, Shiokawa K, Rajeev S. *Leptospira* infection in rats: a literature review of global prevalence and distribution. *PLoS Negl Trop Dis*. 2019;13:e0007499.
18. Yanagihara Y, Villanueva S, Nomura N, et al. *Leptospira* is an environmental bacterium that grows in waterlogged soil. *Microbiol Spectr*. 2022;10:e0215721.
19. Santos AAN, Ribeiro PDS, da Franca GV, et al. *Leptospira interrogans* biofilm formation in *Rattus norvegicus* (Norway rats) natural reservoirs. *PLoS Negl Trop Dis*. 2021;15:e0009736.
20. Meganathan Y, Vishwakarma A, Ramya M. Biofilm formation and social interaction of *Leptospira* in natural and artificial environments. *Res Microbiol*. 2022;173:103981.
21. Lee HS, Levine M, Guptill-Yoran C, Johnson AJ, von Kamecke P, Moore GE. Regional and temporal variations of *Leptospira* seropositivity in dogs in the United States, 2000-2010. *J Vet Intern Med*. 2014;28:779-788.
22. Ghneim GS, Viers JH, Chomel BB, Kass PH, Descollonges DA, Johnson ML. Use of a case-control study and geographic information systems to determine environmental and demographic risk factors for canine leptospirosis. *Vet Res*. 2007;38:37-50.
23. Gautam R, Guptill LF, Wu CC, Potter A, Moore GE. Spatial and spatio-temporal clustering of overall and serovar-specific *Leptospira* microscopic agglutination test (MAT) seropositivity among dogs in the United States from 2000 through 2007. *Prev Vet Med*. 2010;96:122-131.
24. Hennebelle JH, Sykes JE, Carpenter TE, et al. Spatial and temporal patterns of *Leptospira* infection in dogs from northern California: 67 cases (2001-2010). 2013;242:941-947.
25. Smith AM, Stull JW, Evason MD, et al. Investigation of spatio-temporal clusters of positive leptospirosis polymerase chain reaction test results in dogs in the United States, 2009 to 2016. *J Vet Intern Med*. 2021;35:1355-1360.
26. Iverson SA, Levy C, Yaglom HD, et al. Clinical, diagnostic, and epidemiological features of a community-wide outbreak of canine leptospirosis in a low-prevalence region (Maricopa County, Arizona). *J Am Vet Med Assoc*. 2021;258:616-629.
27. County of Los Angeles Public Health. Leptospirosis in Los Angeles County in 2021. <http://www.publichealth.lacounty.gov/vet/Leptospirosis2021.htm>. Accessed August 15, 2023.
28. Balboni A, Mazzotta E, Boniotti MB, et al. Outbreak of *Leptospira borgpetersenii* serogroup Sejroe infection in kennel: the role of dogs as sentinel in specific environments. *Int J Environ Res Public Health*. 2022;19:3906.
29. Mazzotta E, De Zan G, Cocchi M, et al. Feline susceptibility to leptospirosis and presence of immunosuppressive co-morbidities: first european report of *L. interrogans* serogroup Australis Sequence Type 24 in a cat and survey of *Leptospira* exposure in outdoor cats. *Trop Med Infect Dis*. 2023;8:8.
30. Murillo A, Goris M, Ahmed A, Cuenca R, Pastor J. Leptospirosis in cats: current literature review to guide diagnosis and management. *J Fel Med Surg*. 2020;22:216-228.
31. Dorsch R, Ojeda J, Salgado M, et al. Cats shedding pathogenic *Leptospira* spp. – an underestimated zoonotic risk? *PLoS One*. 2020;15:e0239991.
32. Alashraf AR, Lau SF, Khairani-Bejo S, et al. First report of pathogenic *Leptospira* spp. isolated from urine and kidneys of naturally infected cats. *PLoS One*. 2020;15:e0230048.
33. Holzapfel M, Taraveau F, Djelouadi Z. Serological and molecular detection of pathogenic *Leptospira* in domestic and stray cats on Reunion Island, French Indies. *Epidemiol Infect*. 2021;149:e229.
34. Kakita T, Kuba Y, Kyan H, Okano S, Morita M, Koizumi N. Molecular and serological epidemiology of *Leptospira* infection in cats in Okinawa Island, Japan. *Sci Rep*. 2021;11:10365.
35. Bourassi E, Savidge C, Foley P, Hartwig S. Serologic and urinary survey of exposure to *Leptospira* species in a feral cat population of Prince Edward Island, Canada. *J Fel Med Surg*. 2021;23:1155-1161.
36. Sebastian JF, Reagan KL, Peavy T, Zecca IB, Hamer SA, Sykes JE. Evaluation of *Leptospira* infection and exposure in free-roaming cat populations in northern California and southern Texas. *J Fel Med Surg*. 2023;25:1098612X231162471.
37. Bergmann Esteves S, Moreira Santos C, Ferreira Salgado F, et al. Efficacy of commercially available vaccines against canine leptospirosis: a systematic review and meta-analysis. *Vaccine*. 2022;40:1722-1740.
38. Meny P, Iglesias T, Menendez C, et al. Seroprevalence of anti-*Leptospira* antibodies in equines and associated workers-isolation of *Leptospira interrogans* serogroup Canicola from equine urine. *Zoonoses Public Health*. 2022;69:526-536.
39. Grillova L, Angermeier H, Levy M, et al. Circulating genotypes of *Leptospira* in French Polynesia: an 9-year molecular epidemiology surveillance follow-up study. *PLoS Negl Trop Dis*. 2020;14:e0008662.
40. Belsare AV, Gompper ME, Mason M, Munoz-Zanzi C. Investigating *Leptospira* dynamics in a multi-host community using an agent-based modelling approach. *Transbound Emerg Dis*. 2022;69:3780-3789.
41. Levett PN. Usefulness of serologic analysis as a predictor of the infecting serovar in patients with severe leptospirosis. *Clin Infect Dis*. 2003;36:447-452.

42. Shinya S, Muraoka Y, Negishi D, Koizumi N. Molecular epidemiology of *Leptospira* spp. among wild mammals and a dog in Amami Oshima Island, Japan. *PLoS One*. 2021;16:e0249987.
43. Surdel MC, Anderson PN, Hahn BL, Coburn J. Hematogenous dissemination of pathogenic and non-pathogenic *Leptospira* in a short-term murine model of infection. *Front Cell Infect Microbiol*. 2022;12:917962.
44. Coburn J, Picardeau M, Woods CW, Veldman T, Haake DA. Pathogenesis insights from an ancient and ubiquitous spirochete. *PLoS Pathog*. 2021;17:e1009836.
45. Abe K, Kuribayashi T, Takabe K, Nakamura S. Implications of back-and-forth motion and powerful propulsion for spirochetal invasion. *Sci Rep*. 2020;10:13937.
46. Daroz BB, Fernandes LGV, Cavenague MF, et al. A review on host-*Leptospira* interactions: what we know and future expectations. *Front Cell Infect Microbiol*. 2021;11:777709.
47. Nicodemo AC, Duarte-Neto AN. Pathogenesis of pulmonary hemorrhagic syndrome in human leptospirosis. *Am J Trop Med Hyg*. 2021;104:1970-1972.
48. Kohn B, Steinicke K, Arndt G, et al. Pulmonary abnormalities in dogs with leptospirosis. *J Vet Intern Med*. 2010;24:1277-1282.
49. Major A, Schweighauser A, Francey T. Increasing incidence of canine leptospirosis in Switzerland. *Int J Environ Res Public Health*. 2014;11:7242-7260.
50. Schuller S, Francey T, Hartmann K, et al. European consensus statement on leptospirosis in dogs and cats. *J Small Anim Pract*. 2015;56:159-179.
51. Di Azevedo MIN, Santanna R, Carvalho-Costa FA, et al. The same strain leading to different clinical outcomes: the enigma behind the canine leptospirosis. *Microb Pathog*. 2022;165:105500.
52. Rahman SA, Khor KH, Khairani-Bejo S, et al. Detection and characterization of *Leptospira* spp. in dogs diagnosed with kidney and/or liver disease in Selangor, Malaysia. *J Vet Diagn Invest*. 2021;33:834-843.
53. Vieira ML, Nascimento A. Virulent *Leptospira interrogans* induce cytotoxic effects in human platelets in vitro through direct interactions. *Front Microbiol*. 2020;11:572972.
54. Levett PN. Leptospirosis. *Clin Microbiol Rev*. 2001;14:296-326.
55. Freudiger U. Gibt es ein nervöses Syndrom der Leptospirose des Hundes? *Schweiz Arch Tierheilkd*. 1951;93:779-796.
56. Medeiros Fda R, Spichler A, Athanazio DA. Leptospirosis-associated disturbances of blood vessels, lungs and hemostasis. *Acta Trop*. 2010;115:155-162.
57. Wollanke B, Gerhards H, Ackermann K. Infectious uveitis in horses and new insights in its leptospiral biofilm-related pathogenesis. *Microorganisms*. 2022;10:10.
58. Mc IW, Montgomery GL. Renal lesions in *Leptospira canicola* infection in dogs. *J Pathol Bacteriol*. 1952;64:145-160.
59. Premaratne SS, Gamage C, Chandrajith R, et al. Leptospirosis: a potential culprit for chronic kidney disease of uncertain etiology. *Nephron*. 2023;147:1-10.
60. Boomkens SY, Slump E, Egberink HF, Rothuizen J, Penning LC. PCR screening for candidate etiological agents of canine hepatitis. *Vet Microbiol*. 2005;108:49-55.
61. McCallum KE, Constantino-Casas F, Cullen JM, et al. Hepatic leptospiral infections in dogs without obvious renal involvement. *J Vet Intern Med*. 2019;33:141-150.
62. Suputtamongkol Y, Pongtavornpinyo W, Lubell Y, et al. Strategies for diagnosis and treatment of suspected leptospirosis: a cost-benefit analysis. *PLoS Negl Trop Dis*. 2010;4:e610.
63. Zhang AZ, Negoescu D, Munoz-Zanzi C. When and what to test for: a cost-effectiveness analysis of febrile illness test-and-treat strategies in the era of responsible antibiotic use. *PLoS One*. 2020;15:e0227409.
64. Harkin KR, Gartrell CL. Canine leptospirosis in New Jersey and Michigan: 17 cases (1990-1995). *J Am Anim Hosp Assoc*. 1996;32:495-501.
65. Birnbaum N, Barr SC, Center SA, Schermerhorn T, Randolph JF, Simpson KW. Naturally acquired leptospirosis in 36 dogs: serological and clinicopathological features. *J Small Anim Pract*. 1998;39:231-236.
66. Rentko VT, Clark N, Ross LA, Schelling SH. Canine leptospirosis. A retrospective study of 17 cases. *J Vet Intern Med*. 1992;6:235-244.
67. Adin CA, Cowgill LD. Treatment and outcome of dogs with leptospirosis: 36 cases (1990-1998). *J Am Vet Med Assoc*. 2000;216:371-375.
68. Gerlach T, Stephan I. Epidemiologic situation of canine leptospirosis in the northern states of Germany in the years 2003-2006. A retrospective study. *Tierarztl Prax Ausgabe K Kleintiere - Heimtiere*. 2007;35:421-429.
69. Steger-Lieb A, Gerber B, Nicolet J, Gaschen F. An old disease with a new face: canine leptospirosis does not lose its relevance. *Schweiz Arch Tierheilkd*. 1999;141:499-507.
70. Boutilier P, Carr A, Schulman RL. Leptospirosis in dogs: a serologic survey and case series 1996 to 2001. *Vet Ther*. 2003;4:387-396.
71. Knopfler S, Mayer-Scholl A, Luge E, et al. Evaluation of clinical, laboratory, imaging findings and outcome in 99 dogs with leptospirosis. *J Small Anim Pract*. 2017;58:582-588.
72. Buser FC, Schweighauser A, Im Hof-Gut M, et al. Evaluation of C-reactive protein and its kinetics as a prognostic indicator in canine leptospirosis. *J Small Anim Pract*. 2019;60:477-485.
73. Griebisch C, Kirkwood N, Ward MP, et al. Emerging leptospirosis in urban Sydney dogs: a case series (2017-2020). *Aust Vet J*. 2022;100:190-200.
74. Raj J, Campbell R, Tappin S. Clinical findings in dogs diagnosed with leptospirosis in England. *Vet Rec*. 2021;189:e452.
75. Tangeman LE, Littman MP. Clinicopathologic and atypical features of naturally occurring leptospirosis in dogs: 51 cases (2000-2010). *J Am Vet Med Assoc*. 2013;243:1316-1322.
76. Geisen V, Stengel C, Brem S, Müller W, Greene C, Hartmann K. Canine leptospirosis infections – clinical signs and outcome with different suspected *Leptospira* serogroups (42 cases). *J Small Anim Pract*. 2007;48:324-328.
77. Mastroiilli C, Dondi F, Agnoli C, Turba ME, Vezzali E, Gentilini F. Clinicopathologic features and outcome predictors of *Leptospira interrogans* Australis serogroup infection in dogs: a retrospective study of 20 cases (2001-2004). *J Vet Intern Med*. 2007;21:3-10.
78. Prescott JF, McEwen B, Taylor J, Woods JP, Abrams-Ogg A, Wilcock B. Resurgence of leptospirosis in dogs in Ontario: recent findings. *Can Vet J*. 2002;43:955-961.
79. Goldstein RE, Lin RC, Langston CE, Scrivani PV, Erb HN, Barr SC. Influence of infecting serogroup on clinical features of leptospirosis in dogs. *J Vet Intern Med*. 2006;20:489-494.
80. Greenlee JJ, Bolin CA, Alt DP, Cheville NF, Andreasen CB. Clinical and pathologic comparison of acute leptospirosis in dogs caused by two strains of *Leptospira kirschneri* serovar grippotyphosa. *Am J Vet Res*. 2004;65:1100-1107.
81. Burth P, Younes-Ibrahim M, Gonzalez FH, et al. Purification and characterization of a Na⁺, K⁺ ATPase inhibitor found in an endotoxin of *Leptospira interrogans*. *Infect Immun*. 1997;65:1557-1560.
82. Seguro AC, Lomar AV, Rocha AS. Acute renal failure of leptospirosis: nonoliguric and hypokalemic forms. *Nephron*. 1990;55:146-151.
83. Keller SP, Kovacevic A, Howard J, Schweighauser A, Francey T. Evidence of cardiac injury and arrhythmias in dogs with acute kidney injury. *J Small Anim Pract*. 2016;57:402-408.
84. Bendeler KS, Howard J, Francey T, Schweighauser A, Peters LM. Hyperlipasemia in dogs with acute kidney injury treated with and without hemodialysis. *J Vet Intern Med*. 2023;37:1067-1076.

85. Zaragoza C, Barrera R, Centeno F, Tapia JA, Mañé MC. Characterization of renal damage in canine leptospirosis by sodium dodecyl sulphate-polyacrylamide gel electrophoresis (SDS-PAGE) and Western blotting of the urinary proteins. *J Comp Pathol.* 2003;129:169-178.
86. Klosowski ML, Bohn AA. Microscopic detection of *Leptospira* bacterial organisms in urine sediment from a young dog with leptospirosis and a review of the pathobiology and diagnosis of canine leptospirosis. *Vet Clin Pathol.* 2023;52:112-118.
87. Barthelemy A, Viole A, Cambournac M, et al. Hematological and hemostatic alterations associated with a single extracorporeal renal replacement therapy in dogs with acute kidney injury associated leptospirosis: a pilot study. *Top Companion Anim Med.* 2020;38:100406.
88. Baumann D, Fluckiger M. Radiographic findings in the thorax of dogs with leptospiral infection. *Vet Radiol Ultrasound.* 2001;42:305-307.
89. Lippi I, Puccinelli C, Perondi F, et al. Predictors of fatal pulmonary haemorrhage in dogs affected by leptospirosis approaching haemodialysis. *Vet Sci.* 2021;8:8.
90. Gendron K, Christe A, Walter S, et al. Serial CT features of pulmonary leptospirosis in 10 dogs. *Vet Rec.* 2014;174:169.
91. Schweighauser A, Burgener IA, Gaschen F, et al. Small intestinal intussusception in five dogs with acute renal failure and suspected leptospirosis (*L. australis*). *J Vet Emerg Crit Care.* 2009;19:363-368.
92. Forrest LJ, O'Brien RT, Tremelling MS, et al. Sonographic renal findings in 20 dogs with leptospirosis. *Vet Radiol Ultrasound.* 1998;39:337-340.
93. Sonet J, Barthelemy A, Goy-Thollot I, et al. Prospective evaluation of abdominal ultrasonographic findings in 35 dogs with leptospirosis. *Vet Radiol Ultrasound.* 2018;59:98-106.
94. Bertasio C, Boniotti MB, Lucchese L, et al. Detection of new *Leptospira* genotypes infecting symptomatic dogs: is a new vaccine formulation needed? *Pathogens.* 2020;9:9.
95. Goris MG, Hartskeerl RA. Leptospirosis serodiagnosis by the microscopic agglutination test. *Curr Protoc Microbiol.* 2014;32:12E.5.1-12E.5.18.
96. Fraune CK, Schweighauser A, Francey T. Evaluation of the diagnostic value of serologic microagglutination testing and a polymerase chain reaction assay for diagnosis of acute leptospirosis in dogs in a referral center. *J Am Vet Med Assoc.* 2013;242:1373-1380.
97. Reagan KL, Deng S, Sheng J, et al. Use of machine-learning algorithms to aid in the early detection of leptospirosis in dogs. *J Vet Diagn Invest.* 2022;34:612-621.
98. Martin LE, Wiggans KT, Wennogle SA, et al. Vaccine-associated *Leptospira* antibodies in client-owned dogs. *J Vet Intern Med.* 2014;28:789-792.
99. Murray GL, Srikram A, Hoke DE, et al. Major surface protein LipL32 is not required for either acute or chronic infection with *Leptospira interrogans*. *Infect Immun.* 2009;77:952-958.
100. International Leptospirosis Society. International Proficiency Testing Scheme for the Leptospirosis MAT. https://leptosociety.org/proficiency_testing/. Accessed August 15, 2023.
101. Lizer J, Velineni S, Weber A, Krecic M, Meeus P. Evaluation of 3 serological tests for early detection of *Leptospira*-specific antibodies in experimentally infected dogs. *J Vet Intern Med.* 2018;32:201-207.
102. Curtis KM, Foster PC, Smith PS, et al. Performance of a recombinant LipL32 based rapid in-clinic ELISA (SNAP® Lepto) for the detection of antibodies against *Leptospira* in dogs. *Int J App Res Vet Med.* 2015;13:182-189.
103. Kodjo A, Calleja C, Loenser M, Lin D, Lizer J. A rapid in-clinic test detects acute leptospirosis in dogs with high sensitivity and specificity. *Biomed Res Int.* 2016;2016:3760191.
104. Lizer J, Grahlmann M, Hapke H, Velineni S, Lin D, Kohn B. Evaluation of a rapid IgM detection test for diagnosis of acute leptospirosis in dogs. *Vet Rec.* 2017;180:517.
105. Troia R, Balboni A, Zamagni S, et al. Prospective evaluation of rapid point-of-care tests for the diagnosis of acute leptospirosis in dogs. *Vet J.* 2018;237:37-42.
106. Gloor CI, Schweighauser A, Francey T, et al. Diagnostic value of two commercial chromatographic "patient-side" tests in the diagnosis of acute canine leptospirosis. *J Small Anim Pract.* 2017;58:154-161.
107. Winzelberg S, Tasse SM, Goldstein RE, et al. Evaluation of SNAP® Lepto in the diagnosis of leptospirosis infections in dogs: twenty two clinical cases. *Int J App Res Vet Med.* 2015;13:193-198.
108. Sykes JE, Reagan KL, Nally JE, Galloway RL, Haake DA. Role of diagnostics in epidemiology, management, surveillance, and control of leptospirosis. *Pathogens.* 2022;11:11.
109. Riediger IN, Stoddard RA, Ribeiro GS, et al. Rapid, actionable diagnosis of urban epidemic leptospirosis using a pathogenic *Leptospira* lipL32-based real-time PCR assay. *PLoS Negl Trop Dis.* 2017;11:e0005940.
110. Martin EA, Heseltine JC, Creevy KE. The evaluation of the diagnostic value of a pcr assay when compared to a serologic microagglutination test for canine leptospirosis. *Front Vet Sci.* 2022;9:815103.
111. Centers for Disease Control and Prevention. 2023 Infectious Diseases Laboratory Test Directory. <https://www.cdc.gov/laboratory/specimen-submission/list.html>. Accessed August 15, 2023.
112. Accutest. 2023 Online Catalog from Accutest. <https://results.oneworldaccuracy.com/results/catalog/browse?cm=&y=2023&l=en>. Accessed August 15, 2023.
113. Sant'Anna da Costa R, Di Azevedo MIN, Dos Santos Baptista Borges AL, et al. Effect of vaccination against *Leptospira* on shelter asymptomatic dogs following a long-term study. *Animals (Basel).* 2022;12:12.
114. Spangler D, Kish D, Beigel B, et al. Leptospiral shedding and seropositivity in shelter dogs in the Cumberland Gap Region of Southeastern Appalachia. *PLoS One.* 2020;15:e0228038.
115. Miotto BA, Guilloux AGA, Tozzi BF, et al. Prospective study of canine leptospirosis in shelter and stray dog populations: identification of chronic carriers and different *Leptospira* species infecting dogs. *PLoS One.* 2018;13:e0200384.
116. Altheimer K, Jongwattanasipan P, Luengyosluetchakul S, et al. *Leptospira* infection and shedding in dogs in Thailand. *BMC Vet Res.* 2020;16:89.
117. Midence JN, Leutenegger CM, Chandler AM, Goldstein RE. Effects of recent *Leptospira* vaccination on whole blood real-time PCR testing in healthy client-owned dogs. *J Vet Intern Med.* 2012;26:149-152.
118. Hornsby RL, Alt DP, Nally JE. Isolation and propagation of leptospires at 37°C directly from the mammalian host. *Sci Rep.* 2020;10:9620.
119. Centers for Disease Control and Prevention. National Notifiable Diseases Surveillance System (NNDSS). Leptospirosis (*Leptospira interrogans*) 2013 Case Definition. <https://ndc.services.cdc.gov/case-definitions/leptospirosis-2013/>. Accessed September 18, 2023.
120. Centers for Disease Control and Prevention. Leptospirosis: treatment. <https://www.cdc.gov/leptospirosis/treatment/index.html>. Accessed August 15, 2023.
121. Guzman Perez M, Blanch Sancho JJ, Segura Luque JC, et al. Current evidence on the antimicrobial treatment and chemoprophylaxis of human leptospirosis: a meta-analysis. *Pathogens.* 2021;10:10.
122. Monaghan KN, Labato MA, Papich MG. Ampicillin pharmacokinetics in azotemic and healthy dogs. *J Vet Intern Med.* 2021;35:987-992.
123. Langston C, Gordon D. Effects of IV fluids in dogs and cats with kidney failure. *Front Vet Sci.* 2021;8:659960.
124. Ejaz AA, Mohandas R. Are diuretics harmful in the management of acute kidney injury? *Curr Opin Nephrol Hypertens.* 2014;23:155-160.

125. Mohinani A, Patel S, Tan V, et al. Desmopressin as a hemostatic and blood sparing agent in bleeding disorders. *Eur J Haematol*. 2023;110:470-479.
126. Niwattayakul K, Kaewtasi S, Chueasuwanchai S, et al. An open randomized controlled trial of desmopressin and pulse dexamethasone as adjunct therapy in patients with pulmonary involvement associated with severe leptospirosis. *Clin Microbiol Infect*. 2010;16:1207-1212.
127. Segev G. Outcome prediction of acute kidney injury in dogs and cats. *Israel J Vet Med*. 2011;66:82-88.
128. Andrade L, Cleto S, Seguro AC. Door-to-dialysis time and daily hemodialysis in patients with leptospirosis: impact on mortality. *Clin J Am Soc Nephrol*. 2007;2:739-744.
129. Cambournac M, Goy-Thollot I, Guillaumin J, et al. Acute kidney injury management using intermittent low efficiency haemodiafiltration in a critical care unit: 39 dogs (2012-2015). *Acta Vet Scand*. 2019;61:17.
130. Foster JD. Extracorporeal therapies in the emergency room and intensive care unit. *Vet Clin North Am Small Anim Pract*. 2020;50:1215-1236.
131. Francey T, Schweighauser A. Membrane-based therapeutic plasma exchange in dogs: prescription, anticoagulation, and metabolic response. *J Vet Intern Med*. 2019;33:1635-1645.
132. Herath N, Uluwattage W, Welitiya T, et al. Sequel and therapeutic modalities of leptospirosis associated severe pulmonary haemorrhagic syndrome (SPHS); a Sri Lankan experience. *BMC Infect Dis*. 2019;19:451.
133. Francey T. Therapeutic plasma exchange in dogs suffering from leptospirosis. In: Proceedings of the 10th International Leptospirosis Society Meeting. Palmerston North, New Zealand 2017.
134. International Renal Interest Society. Treatment recommendations for CKD in dogs. http://www.iris-kidney.com/pdf/IRIS-DOG-Treatment_Recommendations_2023.pdf. Accessed August 15, 2023.
135. Barthelemy A, Magnin M, Pouzot-Nevoret C, et al. Hemorrhagic, hemostatic, and thromboelastometric disorders in 35 dogs with a clinical diagnosis of leptospirosis: a prospective study. *J Vet Intern Med*. 2017;31:69-80.
136. Petakh P, Nykyforuk A. Predictors of lethality in severe leptospirosis in Transcarpathian region of Ukraine. *Infez Med*. 2022;30:272-276.
137. Al Hariri YK, Sulaiman SAS, Khan AH, et al. Determinants of prolonged hospitalization and mortality among leptospirosis patients attending tertiary care hospitals in northeastern state in peninsular Malaysia: a cross sectional retrospective analysis. *Front Med (Lausanne)*. 2022;9:887292.
138. Segev G, Langston C, Takada K, Kass PH, Cowgill LD. Validation of a clinical scoring system for outcome prediction in dogs with acute kidney injury managed by hemodialysis. *J Vet Intern Med*. 2016;30:803-807.
139. Segev G, Kass PH, Francey T, Cowgill LD. A novel clinical scoring system for outcome prediction in dogs with acute kidney injury managed by hemodialysis. *J Vet Intern Med*. 2008;22:301-308.
140. Perondi F, Lippi I, Ceccherini G, Marchetti V, Bernicchi L, Guidi G. Evaluation of a prognostic scoring system for dogs managed with hemodialysis. *J Vet Emerg Crit Care*. 2018;28:340-345.
141. Grosenbaugh DA, Pardo MC. Fifteen-month duration of immunity for the serovar Grippotyphosa fraction of a tetravalent canine leptospirosis vaccine. *Vet Rec*. 2018;182:665.
142. Wilson S, Stirling C, Thomas A, et al. Duration of immunity of a multivalent (DHPPI/L4R) canine vaccine against four *Leptospira* serovars. *Vaccine*. 2013;31:3126-3130.
143. Minke JM, Bey R, Tronel JP, et al. Onset and duration of protective immunity against clinical disease and renal carriage in dogs provided by a bi-valent inactivated leptospirosis vaccine. *Vet Microbiol*. 2009;137:137-145.
144. Andre-Fontaine G, Triger L. MAT cross-reactions or vaccine cross-protection: retrospective study of 863 leptospirosis canine cases. *Heliyon*. 2018;4:e00869.
145. Bouvet J, Lemaitre L, Cariou C, et al. A canine vaccine against *Leptospira* serovars Icterohaemorrhagiae, Canicola and Grippotyphosa provides cross protection against *Leptospira* serovar Copenhageni. *Vet Immunol Immunopathol*. 2020;219:109985.
146. Moore GE, HogenEsch H. Adverse vaccinal events in dogs and cats. *Vet Clin North Am Small Anim Pract*. 2010;40:393-407.
147. Moore GE, Morrison J, Saito EK, Spofford N, Yang M. Breed, smaller weight, and multiple injections are associated with increased adverse event reports within three days following canine vaccine administration. *J Am Vet Med Assoc*. 2023;1-7.
148. Ohmori K, Masuda K, Maeda S, et al. IgE reactivity to vaccine components in dogs that developed immediate-type allergic reactions after vaccination. *Vet Immunol Immunopathol*. 2005;104:249-256.
149. Franco J, Aryal UK, HogenEsch H, Moore GE. Proteomic analysis of canine vaccines. *Am J Vet Res*. 2023;84:1-7.
150. Haake DA, Levett PN. Leptospirosis in humans. *Curr Top Microbiol Immunol*. 2015;387:65-97.
151. Centers for Disease Control and Prevention. Leptospirosis. <https://www.cdc.gov/leptospirosis/index.html>. Accessed August 15, 2023.
152. Koizumi N, Izumiya H, Ohnishi M. Genetic relatedness of *Leptospira* interrogans serogroup Autumnalis isolated from humans, dogs, and mice in Japan. *BMC Res Notes*. 2020;13:369.
153. Baer R, Turnberg W, Yu D, Wohle R. Leptospirosis in a small animal veterinarian: reminder to follow standardized infection control procedures. *Zoonoses Public Health*. 2010;57:281-284.
154. Mori M, Bourhy P, Le Guyader M, et al. Pet rodents as possible risk for leptospirosis, Belgium and France, 2009 to 2016. *Euro Surveill*. 2017;22:16-00792.
155. Strugnell BW, Featherstone C, Gent M, et al. Weil's disease associated with the adoption of a feral rat. *Vet Rec*. 2009;164:186.
156. Sykes JE, Haake DA, Gamage CD, Mills WZ, Nally JE. A global one health perspective on leptospirosis in humans and animals. *J Am Vet Med Assoc*. 2022;260:1589-1596.
157. New York City Department of Health and Mental Hygiene. 2021 Advisory #35: Increase in Leptospirosis Cases in New York City. <https://www.nyc.gov/assets/doh/downloads/pdf/han/advisory/2021/leptospirosis-cases-increase.pdf>. Accessed August 15, 2023.
158. Ko AI, Goarant C, Picardeau M. *Leptospira*: the dawn of the molecular genetics era for an emerging zoonotic pathogen. *Nat Rev Microbiol*. 2009;7:736-747.
159. Feigin RD, Lobes LA Jr, Anderson D, et al. Human leptospirosis from immunized dogs. *Ann Intern Med*. 1973;79:777-785.
160. Rosenberg BL. Canicola fever; review, with report of two new cases. *Am J Med*. 1951;11:75-88.
161. Meyer KF, Stewart-Anderson B, Eddie B. "Canicola fever", a professional health hazard. *J Am Vet Med Assoc*. 1938;93:332-333.
162. Barkin RM, Glosser JW. Leptospirosis - an epidemic in children. *Am J Epidemiol*. 1973;98:184-191.
163. Thielen BK, Holzbauer S, Templen B, et al. Man's best friend? Locally acquired leptospirosis in a Minnesota boy and his dog. *Clin Infect Dis*. 2023; In review.
164. Guagliardo SAJ, Iverson SA, Reynolds L, et al. Despite high-risk exposures, no evidence of zoonotic transmission during a canine outbreak of leptospirosis. *Zoonoses Public Health*. 2019;66:223-231.
165. Fang F, Benschop J, Wilson P, Collins-Emerson JM, Heuer C, Prattley D. Seroprevalence and exposure to risk factors for leptospirosis among veterinary students at Massey University. *N Z Vet J*. 2014;62:130-135.
166. Mazzotta E, Lucchese L, Salata C, et al. Are small animal practitioners occupationally exposed to leptospirosis? Results of a serological survey. *Int J Environ Res Public Health*. 2022;19:1797.

167. Bjork A, Anderson D, de Perio MA, et al. Seroprevalence of *Coxiella*, *Brucella*, and *Leptospira* among marine mammal rehabilitation workers in California. *Zoonoses Public Health*. 2023; In review.
168. Hetrick K, Harkin KR, Peddireddi L, Henningson J. Evaluation by polymerase chain reaction assay of persistent shedding of pathogenic leptospires in the urine of dogs with leptospirosis. *J Vet Intern Med*. 2022;36:133-140.
169. National Association of State Public Health Veterinarians Veterinary Infection Control Committee. Compendium of Veterinary Standard Precautions for Zoonotic Disease Prevention in Veterinary Personnel. <https://www.nasphv.org/Documents/VeterinaryStandardPrecautions.pdf> 2015 Accessed August 15, 2023.
170. Centers for Disease Control and Prevention. Leptospirosis. Healthcare Workers. https://www.cdc.gov/leptospirosis/health_care_workers/index.html. Accessed August 15, 2023.
171. Centers for Disease Control and Prevention. Leptospirosis. Pets. <https://www.cdc.gov/leptospirosis/pets/index.html>. Accessed August 15, 2023.

How to cite this article: Sykes JE, Francey T, Schuller S, Stoddard RA, Cowgill LD, Moore GE. Updated ACVIM consensus statement on leptospirosis in dogs. *J Vet Intern Med*. 2023;37(6):1966-1982. doi:10.1111/jvim.16903